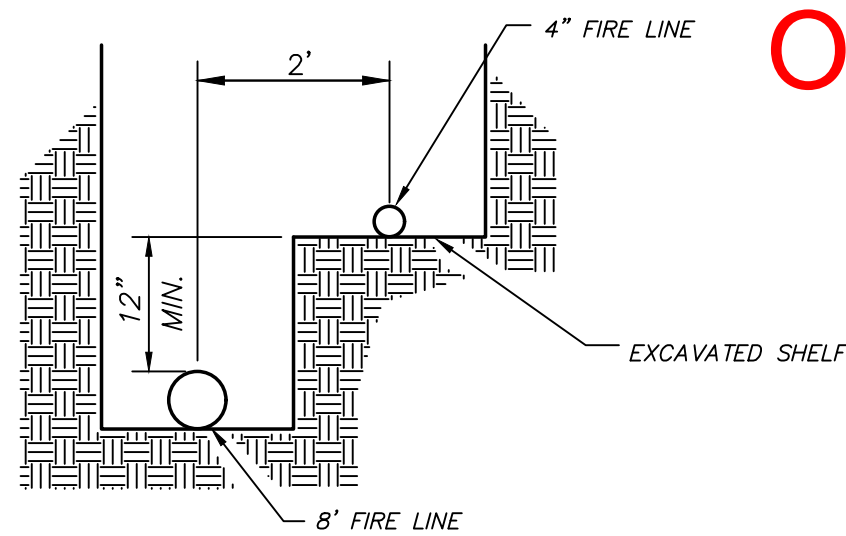


**DOMESTIC WATER LINE
THRUST BLOCK NOTE:**

ALL THRUST BLOCKS IN THE RIGHT-OF-WAY OR EASEMENT SHALL BE PER M.A.G. S.D. NO. 380. ALL THRUST BLOCKS SHALL BE CONSTRUCTED OF M.A.G. CLASS C CONCRETE. FOR ALL ONSITE DOMESTIC WATER LINE THRUST BLOCKS SHALL BE INSTALLED AT ALL CHANGES IN DIRECTION AS AT TEES AND BENDS, CHANGES IN SIZE AS AT REDUCERS, STOPS AS AT DEAD ENDS AND VALVES. THRUST BLOCK SIZING AND INSTALLATION SHALL FOLLOW IAPMO INSTALL STANDARD 8-92 OF THE ARIZONA STATE PLUMBING CODE, WHICH IS BASED ON THE 94 UPC WITH AMENDMENTS.



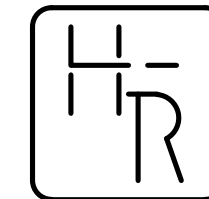
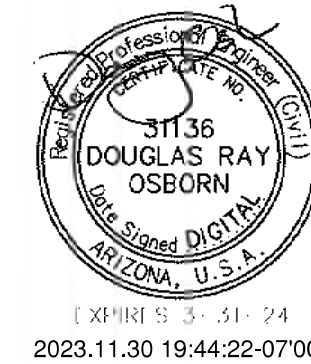
COMMON TRENCH DETAIL
NOT TO SCALE

OFF-SITE ADJACENT WAYS

Legend			
Label	Quantity	Unit	
Water Line - 2" Water Meter Service	2	Count	

E. RAY ROAD

STA. 35+00.00
INTERSECTION OF E. RAY
ROAD AND SOUTH
MOUNTAIN ROAD



HESS - ROUNTREE, INC.
CONSULTING ENGINEERS & LAND SURVEYORS
9831 SOUTH 51ST STREET, SUITE C110
PHOENIX, ARIZONA 85044 (480)496-0244

DES. **DRO** DRN. **ANM** CKD **DRO** JOB NO. **2302-12**

**PRIVATE SANITARY SEWER LINE
CONSTRUCTION NOTES:**

1. INSTALL 5' DIAMETER SEWER MANHOLE WITH 30" DIAMETER FRAME AND COVER (MAG STANDARD DETAIL NO.'S 420-1, 420-2, 420-3 AND 423-2).
2. INSTALL SANITARY SEWER CLEANOUT. (SEE DETAIL ON SHEET C-2).
3. CONNECT TO BUILDING SEWER LINE WITH NECESSARY AND APPROPRIATE FITTINGS. SEE BUILDING PLUMBING DRAWINGS FOR EXACT LOCATION, ELEVATION AND CONTINUATION.
4. INSTALL 8" P.V.C. (ASTM D3034, SDR-35) SEWER LINE.
5. INSTALL 6" P.V.C. (ASTM D3034, SDR-35) SEWER LINE.
6. POTHOLE AND FIELD VERIFY THE EXACT ELEVATION AND LOCATION OF THE EXISTING UTILITY PRIOR TO CONSTRUCTION. NOTIFY DESIGN ENGINEER OF ANY DISCREPANCIES.
7. CORE DRILL AND CONNECT TO EXISTING SEWER MANHOLE WITH A WATERTIGHT CONNECTION. REMOVE AND REFORM BASE AS NEEDED. FIELD VERIFY ELEVATION AND LOCATION OF EXISTING SEWER LINE PRIOR TO CONSTRUCTION.
8. SAWCUT REMOVE AND REPLACE EXISTING A.C. PAVEMENT (CITY OF MESA STANDARD DETAIL NO.'S 19.04.1 AND 19.04.2).
9. CONNECT TO PROPOSED GREASE INTERCEPTOR WITH NECESSARY AND APPROPRIATE FITTINGS. SEE PLUMBING DRAWINGS FOR EXACT LOCATION, ELEVATION AND CONTINUATION.
10. INSTALL 4" P.V.C. (ASTM D3034, SDR-35) SEWER LINE.
11. INSTALL A 6" TO 4" REDUCER.

PRIVATE FIRE LINE CONSTRUCTION NOTES:

1. INSTALL 8" P.V.C. (AWWA C-900, DR-18 CLASS 235) WATER LINE INCLUDING ALL BENDS, TEES, FITTINGS AND THRUST BLOCKS.
2. INSTALL FIRE HYDRANT (MAG STANDARD DETAIL NO.'S 360-1 AND 360-3).
3. INSTALL 6" POLYWRAPPED DUCTILE IRON (A.W.W.A. C-150, PRESSURE CLASS 350) WATER LINE INCLUDING ALL BENDS, TEES, FITTINGS AND THRUST BLOCKS.
4. INSTALL 8" GATE VALVE WITH VALVE BOX AND COVER (MAG STANDARD DETAIL NO. 391-1, TYPE 'C').
5. INSTALL 6" GATE VALVE WITH VALVE BOX AND COVER (MAG STANDARD DETAIL NO. 391-1, TYPE 'C').
6. SEE PLUMBING AND FIRE SPRINKLER DRAWINGS FOR CONTINUATION.
7. INSTALL 16" X 8" TAPPING SLEEVE AND 8" GATE VALVE WITH VALVE BOX AND COVER (MAG STANDARD DETAIL NO. 340 AND MAG STANDARD DETAIL NO. 391-1, TYPE 'C').
8. POTHOLE AND FIELD VERIFY THE EXACT ELEVATION AND LOCATION OF THE EXISTING UTILITY PRIOR TO CONSTRUCTION. NOTIFY DESIGN ENGINEER OF ANY DISCREPANCIES.
9. INSTALL 8" REDUCED PRESSURE PRINCIPAL BACKFLOW PREVENTER (CITY OF MESA STANDARD DETAIL NO. M-31.01).
10. SAWCUT REMOVE AND REPLACE EXISTING A.C. PAVEMENT (CITY OF MESA STANDARD DETAIL NO.'S 19.04.1 AND 19.04.2).
11. INSTALL 8"-90° BEND.
12. INSTALL 8"-45° BEND.
13. INSTALL 8" TEE.
14. INSTALL 8" X 6" TEE.
15. CONSTRUCT VERTICAL REALIGNMENT (MAG STANDARD DETAIL NO. 381).
16. INSTALL 8" POLYWRAPPED DUCTILE IRON (A.W.W.A. C-150, CLASS 350) WATER LINE.

THRUST BLOCKS WITHIN THE RIGHT-OF-WAY SHALL CONFORM TO MAG STANDARD DETAIL NO. 380. BEDDING OF PROPOSED UTILITIES WITHIN THE RIGHT-OF-WAY SHALL CONFORM TO CITY OF MESA OR MARICOPA COUNTY DEPARTMENT OF TRANSPORTATION STANDARDS, WHICHEVER IS GREATER.

STA. 7+96.08
(30.3' RT.)

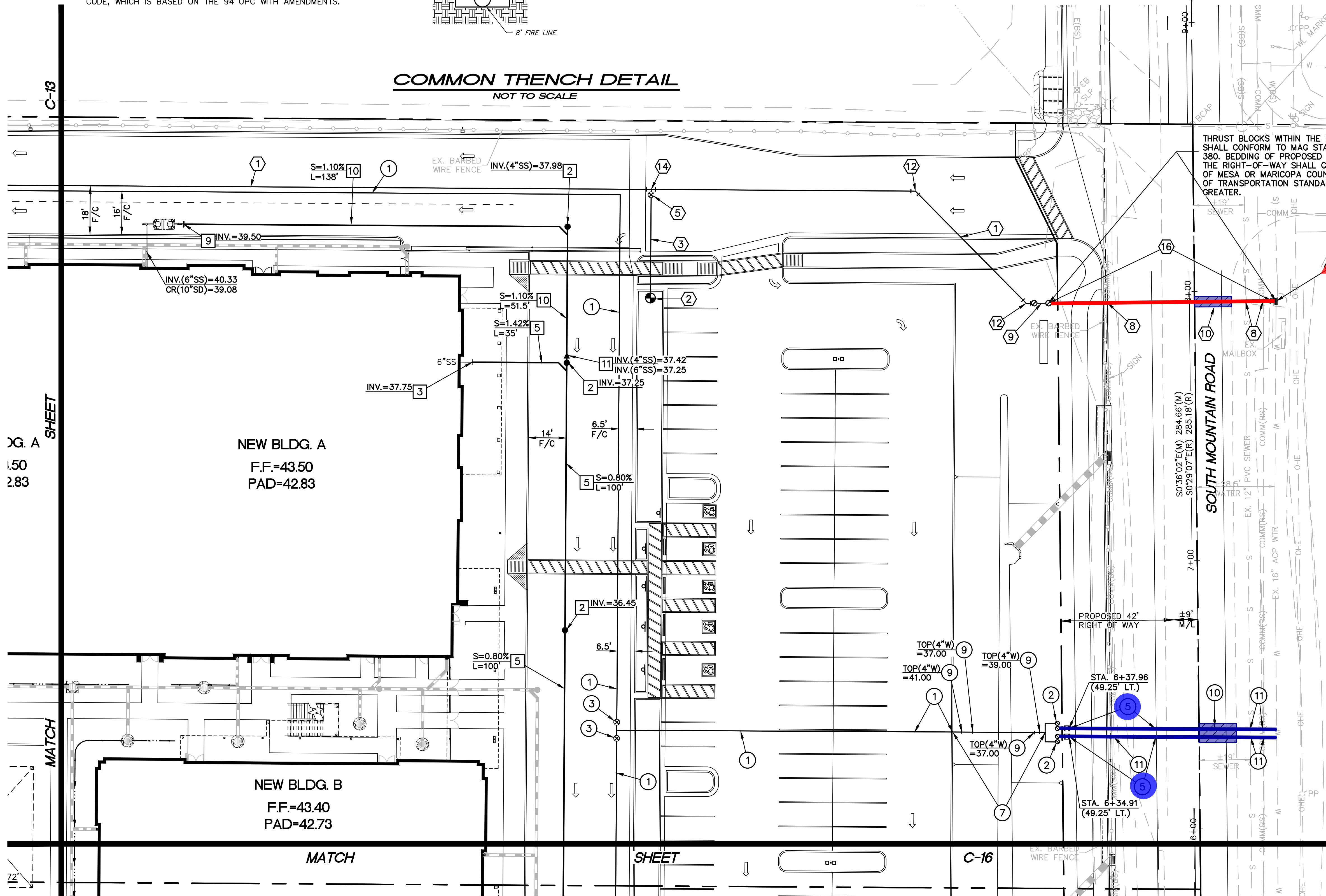
SOUTH MOUNTAIN ROAD

PROPOSED 42'
RIGHT OF WAY

STA. 6+37.96
(49.25' LT.)

STA. 6+34.91
(49.25' LT.)

SCALE: 1"=20'



PRIVATE FIRE LINE THRUST BLOCK NOTE:

ALL THRUST BLOCKS SHALL BE CONSTRUCTED OF M.A.G. CLASS C CONCRETE. FOR ALL PRIVATE FIRE LINE THRUST BLOCKS THE AREA OF BEARING FACE SHALL BE PER NFPA-24. THE FOLLOWING CHART IS FROM NFPA-24. SEE DOMESTIC WATER LINE THRUST BLOCK GENERAL NOTE FOR THRUST BLOCKS WITHIN THE RIGHT-OF-WAY.

PIPE SIZE (IN.)	90° BEND (SQ.FT.)	45° BEND (SQ.FT.)	TEES, PLUGS, CAPS AND HYDRANTS (SQ.FT.)
4	2	2	2
6	5	3	4
8	8	5	6
10	13	7	9
12	18	10	13
14	25	14	18
16	32	18	23

UNDERGROUND UTILITY TRACER WIRE NOTE:

ALL NEW UNDERGROUND FACILITIES/UTILITIES SHALL BE INSTALLED WITH A DETECTABLE UNDERGROUND LOCATION DEVICE. INSTALL A #18 INSULATED TRACER WIRE SECURELY ATTACHED TO EACH UTILITY AT 8'-FEET ON CENTER. 12" OF TRACER WIRE SHALL BE ACCESSIBLE ABOVE GRADE AT THE TERMINATION AND SHALL BE SECURELY ATTACHED AT THAT POINT. THE CONTRACTOR SHALL VERIFY WHICH COLOR TO USE FOR STORM DRAIN, WATER, SEWER, ETC., WITH THE CITY OF MESA AND APPROPRIATE UTILITY COMPANIES. THE CONTRACTOR SHALL INCLUDE ALL COSTS ASSOCIATED WITH THIS REQUIREMENT IN THEIR BID.

NOTE:

ALL NEW ONSITE UNDERGROUND UTILITIES (WATER, SEWER, FIRE AND STORM DRAIN LINES) SHALL BE BEDDED WITH A.B.C., PER MAG SECTION 702, FROM 4" (MIN.) BELOW THE BOTTOM OF THE PIPE TO 12" (MIN.) ABOVE THE TOP OF THE PIPE. BEDDING WITHIN THE RIGHT-OF-WAY SHALL CONFORM TO CITY OF MESA AND MARICOPA COUNTY DEPARTMENT OF TRANSPORTATION STANDARDS, WHICHEVER IS MORE STRINGENT.

**PRIVATE DOMESTIC WATER LINE
CONSTRUCTION NOTES:**

1. INSTALL 4" P.V.C. (RING TITE, CLASS 200) WATER LINE WITH CAST IRON BENDS AND FITTINGS.
2. INSTALL 2" REDUCED PRESSURE BACKFLOW PREVENTION ASSEMBLY (CITY OF MESA STANDARD DETAIL NO. M-31.03). INSTALL WITH SECURITY CAGE AND CONCRETE PAD.
3. INSTALL 4" GATE VALVE WITH VALVE BOX AND COVER (MAG STANDARD DETAIL NO. 391-1, TYPE 'C').
4. CONNECT TO BUILDING DOMESTIC WATER LINE WITH NECESSARY AND APPROPRIATE FITTINGS. SEE PLUMBING DRAWINGS FOR EXACT LOCATION AND CONTINUATION.
5. INSTALL NEW 2" DOMESTIC WATER SERVICE, AND 2" WATER METER WITH METER BOX AND COVER (CITY OF MESA STANDARD DETAIL NOS. M-49.01, .02 AND .03). SERVICES WILL BE PARALLEL PER CITY OF MESA STANDARD DETAIL NO. M-29.02.

6. INSTALL NEW 2" LANDSCAPE WATER SERVICE, AND 2" WATER METER WITH METER BOX AND COVER (CITY OF MESA STANDARD DETAIL NOS. M-49.01, .02 AND .03).
7. INSTALL 4" POLYWRAPPED DUCTILE IRON (A.W.W.A. C-150, CLASS 350) WATER LINE.
8. SEE LANDSCAPING PLANS FOR CONTINUATION.
9. CONSTRUCT VERTICAL REALIGNMENT (MAG STANDARD DETAIL NO. 381).
10. SAWCUT REMOVE AND REPLACE EXISTING A.C. PAVEMENT (CITY OF MESA STANDARD DETAIL NO.'S 19.04.1 AND 19.04.2).
11. POTHOLE AND FIELD VERIFY THE EXACT ELEVATION AND LOCATION OF THE EXISTING UTILITY PRIOR TO CONSTRUCTION. NOTIFY DESIGN ENGINEER OF ANY DISCREPANCIES.



**PRIVATE DOMESTIC WATER, SANITARY SEWER
AND FIRE LINE PLAN**

QUEEN CREEK UNIFIED SCHOOL DISTRICT NO. 95

**IMPROVEMENT PLANS FOR
QUEEN CREEK ELEMENTARY SCHOOL #10**

DRAWING STATUS	SHEET	OF	
1ST CITY SUBMITTAL SET			
	18	16	C-14
DATE:	11-30-23		

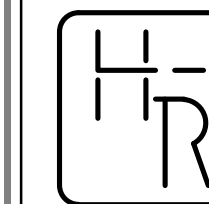
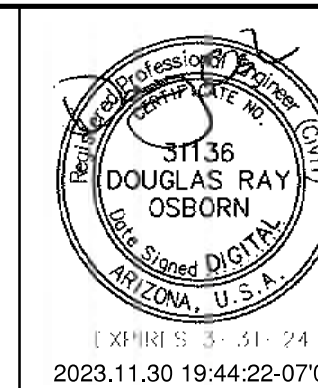
UNDERGROUND UTILITY TRACER WIRE NOTE:

ALL NEW UNDERGROUND FACILITIES/UTILITIES SHALL BE INSTALLED WITH A DETECTABLE UNDERGROUND LOCATION DEVICE. INSTALL A #18 INSULATED TRACER WIRE SECURELY ATTACHED TO EACH UTILITY AT 8- FEET ON CENTER. 12" OF TRACER WIRE SHALL BE ACCESSIBLE ABOVE GRADE AT THE TERMINATION AND SHALL BE SECURELY ATTACHED AT THAT POINT. THE CONTRACTOR SHALL VERIFY WHICH COLOR TO USE FOR STORM DRAIN, WATER, SEWER, ETC., WITH THE CITY OF MESA AND APPROPRIATE UTILITY COMPANIES. THE CONTRACTOR SHALL INCLUDE ALL COSTS ASSOCIATED WITH THIS REQUIREMENT IN THEIR BID.

DOMESTIC WATER LINE THRUST BLOCK NOTE:

ALL THRUST BLOCKS IN THE RIGHT-OF-WAY OR EASEMENT SHALL BE PER M.A.G. S.D. NO. 380. ALL THRUST BLOCKS SHALL BE CONSTRUCTED OF M.A.G. CLASS C CONCRETE. FOR ALL ONSITE DOMESTIC WATER LINE, THRUST BLOCKS SHALL BE INSTALLED AT ALL; CHANGES IN DIRECTION AS AT TEES AND BENDS, CHANGES IN SIZE AS AT REDUCERS, STOPS AS AT DEAD ENDS AND VALVES. THRUST BLOCK SIZING AND INSTALLATION SHALL FOLLOW IAPMO INSTALL STANDARD 8-92 OF THE ARIZONA STATE PLUMBING CODE, WHICH IS BASED ON THE 94 UPC WITH AMENDMENTS.

OFF-SITE ADJACENT WAYS



HESS - ROUNTREE, INC.
CONSULTING ENGINEERS & LAND SURVEYORS
9831 SOUTH 51ST STREET, SUITE C110
PHOENIX, ARIZONA 85044 (480)496-0244

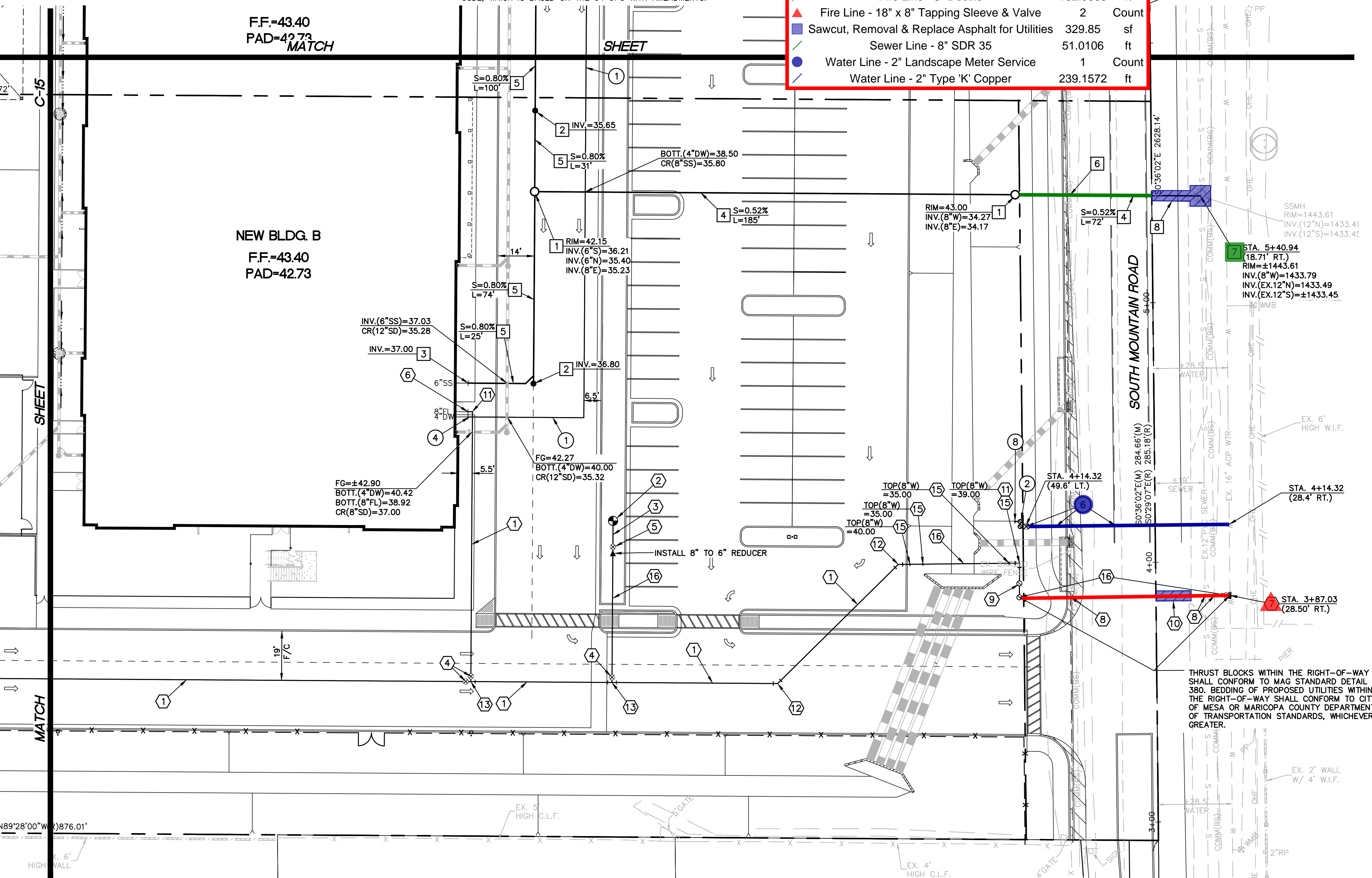
DES. **DRO** DRN. **ANM** CKD **DRO** JOB NO. **2302-12**

PRIVATE SANITARY SEWER LINE CONSTRUCTION NOTES:

- INSTALL 5' DIAMETER SEWER MANHOLE WITH 30" DIAMETER FRAME AND COVER (MAG STANDARD DETAIL NO.S 420-1, 420-2, 420-3 AND 423-2).
- INSTALL SANITARY SEWER CLEANOUT. (SEE DETAIL ON SHEET C-2).
- CONNECT TO BUILDING SEWER LINE WITH NECESSARY AND APPROPRIATE FITTINGS. SEE BUILDING PLUMBING DRAWINGS FOR EXACT LOCATION, ELEVATION AND CONTINUATION.
- INSTALL 8" P.V.C. (ASTM D3034, SDR-35) SEWER LINE.
- INSTALL 6" P.V.C. (ASTM D3034, SDR-35) SEWER LINE.
- POTHOLE AND FIELD VERIFY THE EXACT ELEVATION AND LOCATION OF THE EXISTING UTILITY PRIOR TO CONSTRUCTION. NOTIFY DESIGN ENGINEER OF ANY DISCREPANCIES.
- CORE DRILL AND CONNECT TO EXISTING SEWER MANHOLE WITH A WATERTIGHT CONNECTION. REMOVE AND REFORM BASE AS NEEDED. FIELD VERIFY ELEVATION AND LOCATION OF EXISTING SEWER LINE PRIOR TO CONSTRUCTION.
- SAWCUT REMOVE AND REPLACE EXISTING A.C. PAVEMENT (CITY OF MESA STANDARD DETAIL NO.S 19.04.1 AND 19.04.2).
- CONNECT TO PROPOSED GREASE INTERCEPTOR WITH NECESSARY AND APPROPRIATE FITTINGS. SEE PLUMBING DRAWINGS FOR EXACT LOCATION, ELEVATION AND CONTINUATION.
- INSTALL 4" P.V.C. (ASTM D3034, SDR-35) SEWER LINE.
- INSTALL A 6" TO 4" REDUCER.

PRIVATE FIRE LINE CONSTRUCTION NOTES:

- INSTALL 8" P.V.C. (AWWA C-900, DR-18 CLASS 235) WATER LINE INCLUDING ALL BENDS, TEES, FITTINGS AND THRUST BLOCKS.
- INSTALL FIRE HYDRANT (MAG STANDARD DETAIL NO.S 360-1 AND 360-3).
- INSTALL 6" POLYWRAPPED DUCTILE IRON (A.W.W.A. C-150, PRESSURE CLASS 350) WATER LINE INCLUDING ALL BENDS, TEES, FITTINGS AND THRUST BLOCKS.
- INSTALL 8" GATE VALVE WITH VALVE BOX AND COVER (MAG STANDARD DETAIL NO. 391-1, TYPE 'C').
- INSTALL 6" GATE VALVE WITH VALVE BOX AND COVER (MAG STANDARD DETAIL NO. 391-1, TYPE 'C').
- SEE PLUMBING AND FIRE SPRINKLER DRAWINGS FOR CONTINUATION.
- INSTALL 16" X 8" TAPPING SLEEVE AND 8" GATE VALVE WITH VALVE BOX AND COVER (MAG STANDARD DETAIL NO. 340 AND MAG STANDARD DETAIL NO. 391-1, TYPE 'C').
- POTHOLE AND FIELD VERIFY THE EXACT ELEVATION AND LOCATION OF THE EXISTING UTILITY PRIOR TO CONSTRUCTION. NOTIFY DESIGN ENGINEER OF ANY DISCREPANCIES.
- INSTALL 8" REDUCED PRESSURE PRINCIPAL BACKFLOW PREVENTER (CITY OF MESA STANDARD DETAIL NO. M-31.01).
- SAWCUT REMOVE AND REPLACE EXISTING A.C. PAVEMENT (CITY OF MESA STANDARD DETAIL NO.S 19.04.1 AND 19.04.2).
- INSTALL 8"-90° BEND.
- INSTALL 8"-45° BEND.
- INSTALL 8" TEE.
- INSTALL 8" X 6" TEE.
- CONSTRUCT VERTICAL REALIGNMENT (MAG STANDARD DETAIL NO. 381).
- INSTALL 8" POLYWRAPPED DUCTILE IRON (A.W.W.A. C-150, CLASS 350) WATER LINE.



PRIVATE FIRE LINE THRUST BLOCK NOTE:

ALL THRUST BLOCKS SHALL BE CONSTRUCTED OF M.A.G. CLASS C CONCRETE. FOR ALL PRIVATE FIRE LINE THRUST BLOCKS THE AREA OF BEARING FACE SHALL BE PER NFPA-24. THE FOLLOWING CHART IS FROM NFPA-24. SEE DOMESTIC WATER LINE THRUST BLOCK GENERAL NOTE FOR THRUST BLOCKS WITHIN THE RIGHT-OF-WAY.

PIPE SIZE (IN.)	90° BEND (SQ.FT.)	45° BEND (SQ.FT.)	TEES, PLUGS, CAPS AND HYDRANTS (SQ.FT.)
4	2	2	2
6	5	3	4
8	13	7	9
10	18	10	13
12	25	14	18
14	32	18	23
16			

NOTE:

ALL NEW ONSITE UNDERGROUND UTILITIES (WATER, SEWER, FIRE AND STORM DRAIN LINES) SHALL BE BEDDED WITH A.B.C., PER MAG SECTION 702, FROM 4" (MIN.) BELOW THE BOTTOM OF THE PIPE TO 12" (MIN.) ABOVE THE TOP OF THE PIPE. BEDDING WITHIN THE RIGHT-OF-WAY SHALL CONFORM TO CITY OF MESA AND MARICOPA COUNTY DEPARTMENT OF TRANSPORTATION STANDARDS, WHICHEVER IS MORE STRINGENT.

PRIVATE DOMESTIC WATER LINE CONSTRUCTION NOTES:

- INSTALL 4" P.V.C. (RING TITE, CLASS 200) WATER LINE WITH CAST IRON BENDS AND FITTINGS.
- INSTALL 2" REDUCED PRESSURE BACKFLOW PREVENTION ASSEMBLY (CITY OF MESA STANDARD DETAIL NO. M-31.03). INSTALL WITH SECURITY CAGE AND CONCRETE PAD.
- INSTALL 4" GATE VALVE WITH VALVE BOX AND COVER (MAG STANDARD DETAIL NO. 391-1, TYPE 'C').
- CONNECT TO BUILDING DOMESTIC WATER LINE WITH NECESSARY AND APPROPRIATE FITTINGS. SEE PLUMBING DRAWINGS FOR EXACT LOCATION AND CONTINUATION.
- INSTALL NEW 2" DOMESTIC WATER SERVICE, AND 2" WATER METER WITH METER BOX AND COVER (CITY OF MESA STANDARD DETAIL NOS. M-49.01, .02 AND .03). SERVICES WILL BE PARALLEL PER CITY OF MESA STANDARD DETAIL NO. M-29.02.

- INSTALL NEW 2" LANDSCAPE WATER SERVICE, AND 2" WATER METER WITH METER BOX AND COVER (CITY OF MESA STANDARD DETAIL NOS. M-49.01, .02 AND .03).
- INSTALL 4" POLYWRAPPED DUCTILE IRON (A.W.W.A. C-150, CLASS 350) WATER LINE.
- SEE LANDSCAPING PLANS FOR CONTINUATION
- CONSTRUCT VERTICAL REALIGNMENT (MAG STANDARD DETAIL NO. 381).
- SAWCUT REMOVE AND REPLACE EXISTING A.C. PAVEMENT (CITY OF MESA STANDARD DETAIL NO.S 19.04.1 AND 19.04.2).
- POTHOLE AND FIELD VERIFY THE EXACT ELEVATION AND LOCATION OF THE EXISTING UTILITY PRIOR TO CONSTRUCTION. NOTIFY DESIGN ENGINEER OF ANY DISCREPANCIES.

SCALE: 1"=20'

PRIVATE DOMESTIC WATER, SANITARY SEWER AND FIRE LINE PLAN

QUEEN CREEK UNIFIED SCHOOL DISTRICT NO. 95

IMPROVEMENT PLANS FOR QUEEN CREEK ELEMENTARY SCHOOL #10

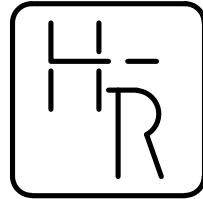
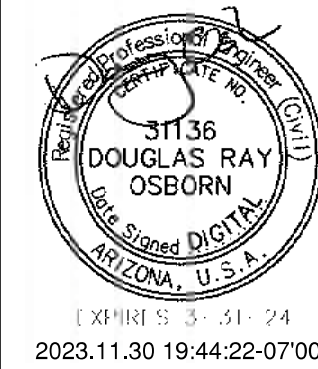
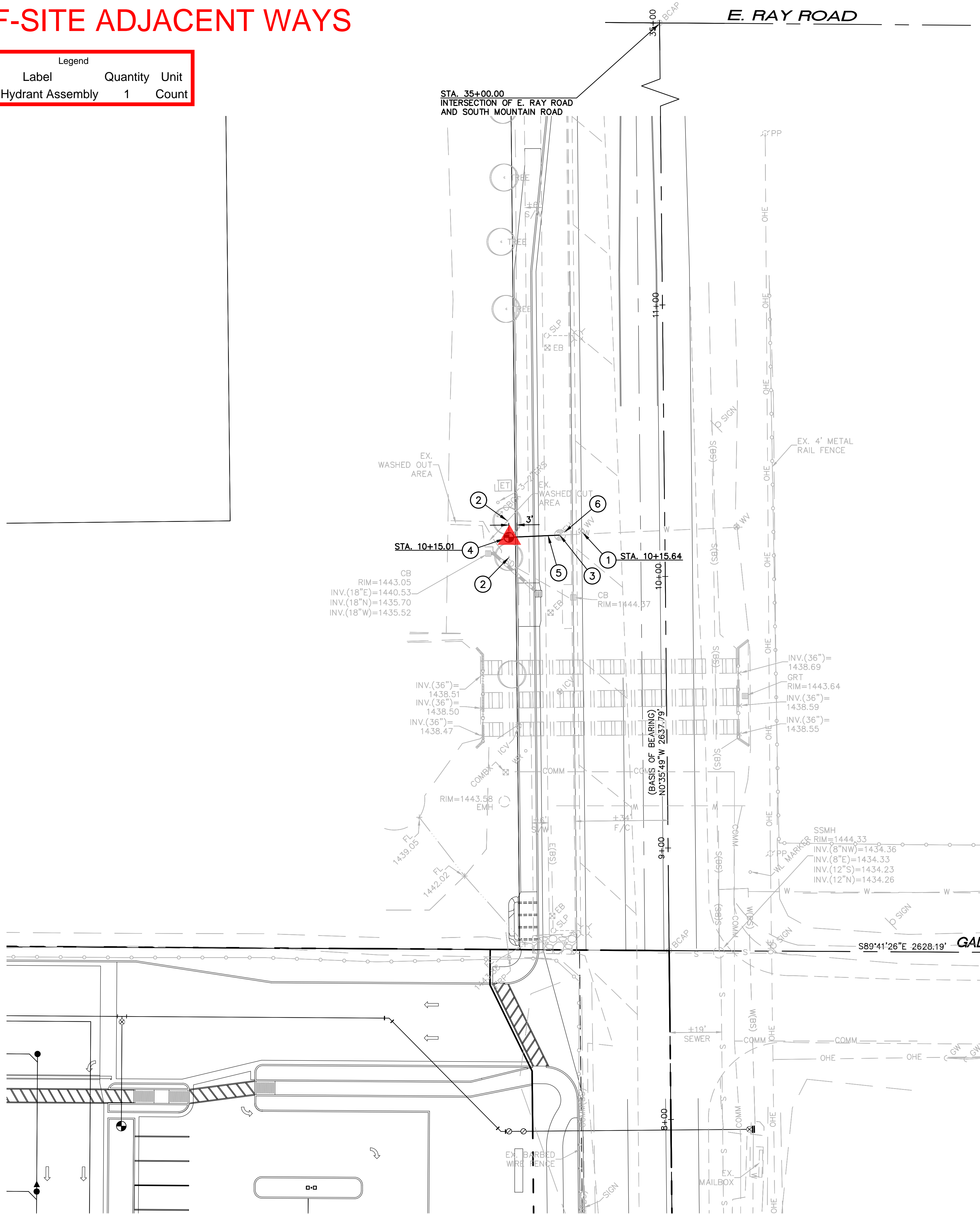
DRAWING STATUS	SHEET	OF	
1ST CITY SUBMITTAL SET			
	16	18	C-16
DATE:	11-30-23		



230212WCS.DWG

OFF-SITE ADJACENT WAYS

Legend	Label	Quantity	Unit
▲	Fire Hydrant Assembly	1	Count



HESS - ROUNTREE, INC.
CONSULTING ENGINEERS & LAND SURVEYORS
9831 SOUTH 51ST STREET, SUITE C110
PHOENIX, ARIZONA 85044 (480)496-0244

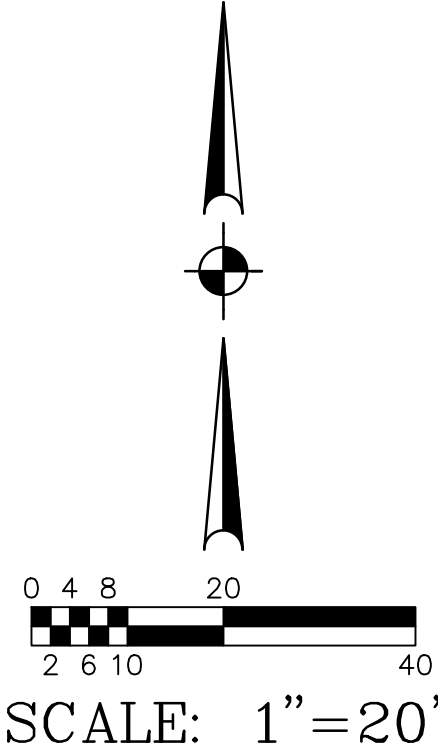
DES. **DRO** DRN. **ANM** CKD **DRO** JOB NO. **2302-12**

PUBLIC FIRE HYDRANT CONSTRUCTION NOTES:

- EXISTING WATER VALVE TO REMAIN. ADJUST TO NEW FINISH GRADE AND INSTALL WITH NEW CONCRETE COLLAR PER MAG STANDARD DETAIL 270.
- REMOVE EXISTING TREE.
- CONNECT NEW WATER LINE TO EXISTING WATER LINE WITH NECESSARY AND APPROPRIATE FITTINGS. CONTRACTOR SHALL POT HOLE AND FIELD VERIFY EXISTING LOCATION, ELEVATION AND SIZE OF WATER LINE PRIOR TO THE START OF CONSTRUCTION.
- INSTALL FIRE HYDRANT (MAG STANDARD DETAIL NO. 360-1, 360-3 AND 362).
- INSTALL 6" DUCTILE IRON WATER LINE (AWWA C-150, PRESSURE CLASS 350) WITH POLYWRAP.
- REMOVE EXISTING FIRE HYDRANT.

NOTE:

THRUST BLOCKS SHALL CONFORM TO MAG STANDARD DETAIL NO. 380



PUBLIC FIRE HYDRANT PLAN			
QUEEN CREEK UNIFIED SCHOOL DISTRICT NO. 95			
IMPROVEMENT PLANS FOR QUEEN CREEK ELEMENTARY SCHOOL #10			
DRAWING STATUS	SHEET	OF	PW-2
1ST CITY SUBMITTAL SET	18	18	
DATE: 11-30-23			



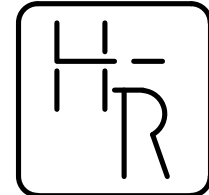
OFFSITE PAVING CONSTRUCTION NOTES:

1. INSTALL CONCRETE SIDEWALK (MAG STANDARD DETAIL NO. 230).
2. CONSTRUCT CONCRETE VERTICAL CURB AND GUTTER (MAG STANDARD DETAIL NO. 220-1, TYPE A).
3. MATCH EXISTING ELEVATION AND LOCATION.
4. SAWCUT AND REMOVE EXISTING A.C. PAVEMENT, CONCRETE VERTICAL CURB, GUTTER AND SIDEWALK AS REQUIRED FOR NEW CONSTRUCTION.
5. CONSTRUCT DRIVEWAY ENTRANCE (MARICOPA COUNTY DEPARTMENT OF TRANSPORTATION STANDARD DETAIL NO. 2036-2, WIDTH PER PLAN).
6. CONSTRUCT 12' WIDE CONCRETE SIDEWALK SCUPPER WITH SPILLWAY AND SAFETY RAIL (MAG STANDARD DETAIL NO. 206-1, -2). SPILLWAY SHALL EXTEND ONE FOOT BELOW THE SAFETY RAIL SIDEWALK ABOVE.
7. CONSTRUCT CURB OPENING CATCH BASIN (MAG STANDARD DETAIL NO. 533-1, -2, -3 LENGTH IS 17'. V DIMENSION SHALL BE PER THE STORM DRAIN INVERTS SHOWN ON THE PLANS.
8. INSTALL 12" THICK ANGULAR RIP-RAP (D50=6"). COLOR PER OWNER. INSTALL MIRAFI 180N FILTER FABRIC BENEATH RIP-RAP.
9. INSTALL A.C. PAVEMENT SECTION PER GEOTECHNICAL ENGINEER RECOMMENDATIONS.

10. SEE OFFSITE STRIPING PLANS FOR DETAILS ON PAINT STRIPING ALL OFFSITE DIRECTIONAL ARROWS, DRIVE LANES, ETC.
11. INSTALL 18" H.D.P.E. DRAINAGE PIPE WITH SMOOTH INTERIOR AND 10.8 P.S.I. JOINTS.
12. INSTALL ASPHALT PAVEMENT EDGE (MAG STANDARD DETAIL NO. 201, TYPE 'B').
13. POTHOLE AND FIELD VERIFY ELEVATION AND LOCATION OF EXISTING UTILITIES PRIOR TO THE START OF CONSTRUCTION. NOTIFY DESIGN ENGINEER OF ANY CONFLICTS.
14. RELOCATE EXISTING STREET LIGHT AND ASSOCIATED ELECTRICAL UTILITIES. SEE OFFSITE STREET LIGHT PLANS FOR DETAILS.
15. EXISTING TREE TO REMAIN. PROTECT FROM DAMAGE.
16. REMOVE EXISTING TREE.
17. INSTALL CURB OPENING CATCH BASIN (MAG STANDARD DETAIL NO. 533-1, -2, -3, LENGTH IS 10').
18. CORE DRILL AND CONNECT TO EXISTING CATCH BASIN WITH NEW 18" H.D.P.E. PIPE USING NON-SHRINKING MORTAR TO PROVIDE A WATERTIGHT CONNECTION.

19. EXISTING COMMUNICATION OR ELECTRICAL BOX TO REMAIN. PROTECT FROM DAMAGE. CONTRACTOR TO FIELD VERIFY EXACT LAYOUT OF EXISTING UTILITY PRIOR TO CONSTRUCTION.
20. EXISTING ELECTRICAL UTILITY MANHOLE TO REMAIN. PROTECT FROM DAMAGE. CONTRACTOR TO FIELD VERIFY EXACT LAYOUT OF EXISTING UTILITY PRIOR TO CONSTRUCTION.
21. EXISTING ELECTRICAL TRANSFORMER BOX TO REMAIN. PROTECT FROM DAMAGE. CONTRACTOR TO FIELD VERIFY EXACT LAYOUT OF EXISTING UTILITY PRIOR TO CONSTRUCTION.
22. INSTALL 30" H.D.P.E. PIPE WITH SMOOTH INTERIOR AND 10.8 P.S.I. JOINTS. SEE GRADING AND DRAINAGE PLANS FOR ADDITIONAL INFORMATION.

23. EXISTING COMMUNICATION LINE TO BE RELOCATED TO PROVIDE ADEQUATE SEPARATION FROM PROPOSED NEW CATCH BASINS AND STORM DRAIN PIPE. CONTRACTOR SHALL COORDINATION RELOCATION WITH APPROPRIATE UTILITY COMPANY.

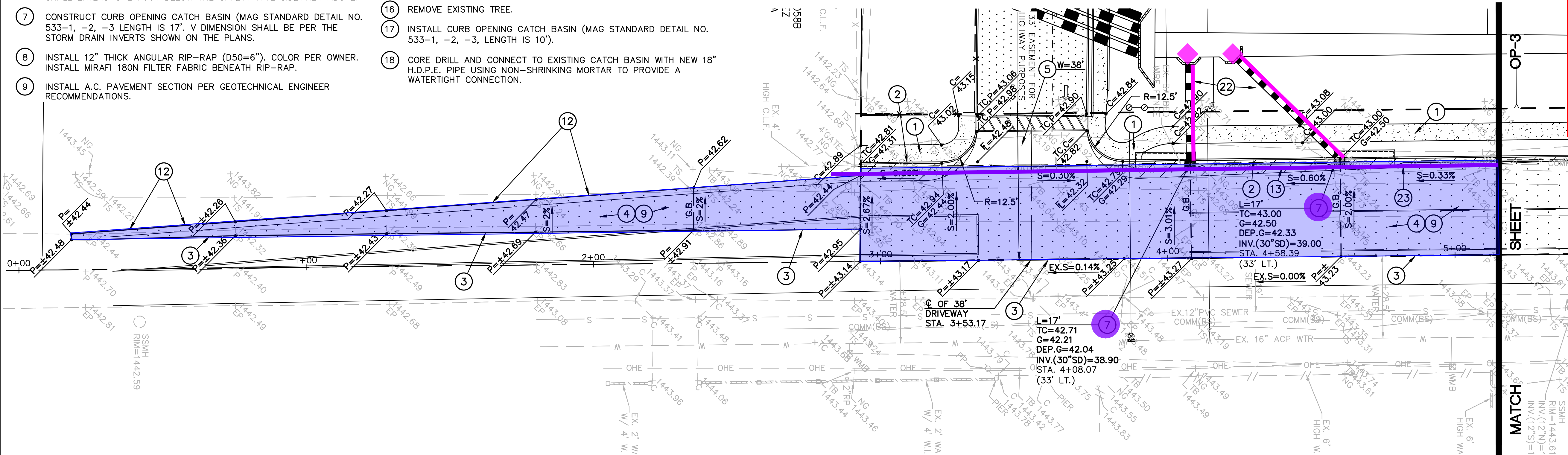


HESS - ROUNTREE, INC.
CONSULTING ENGINEERS & LAND SURVEYORS
9831 SOUTH 51ST STREET, SUITE C110
PHOENIX, ARIZONA 85044 (480)496-0244

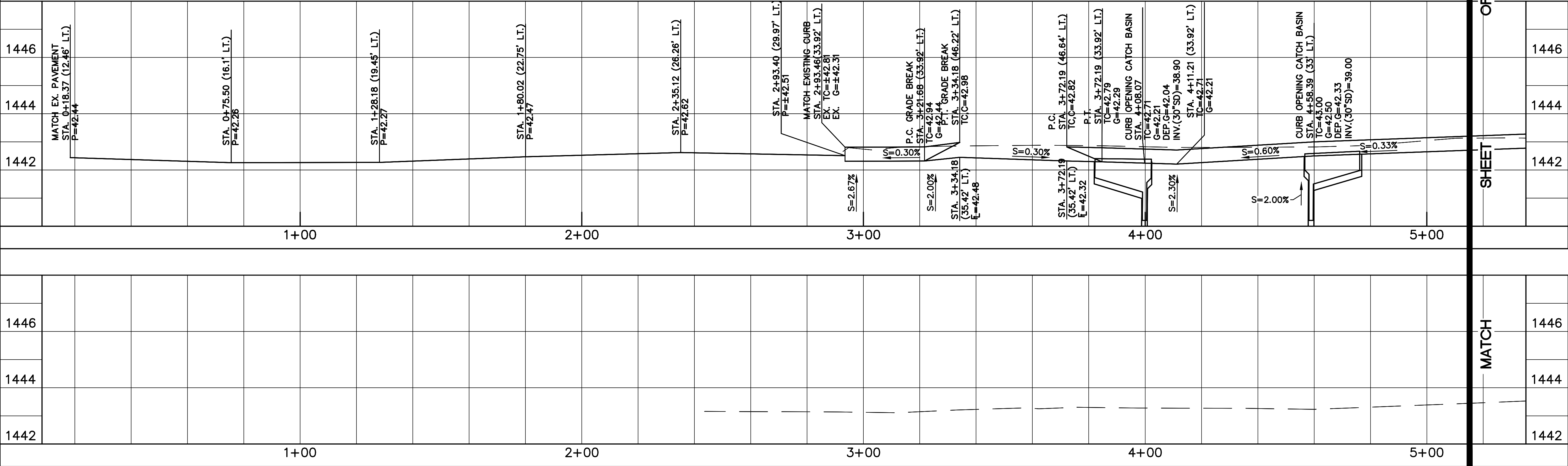
DES. **DRO** DRN. **ANM** CKD **DRO** JOB NO. **2302-12**

OFF-SITE ADJACENT WAYS

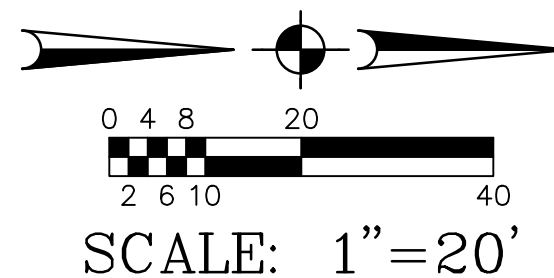
Legend			
Label	Quantity	Unit	
Off-Site Asphalt Pavement	26,952.40	sf	
Relocate Existing Communication Line	562.4276	ft	
Sidewalk Scupper	1	Count	
Single Catch Basin	5	Count	
Storm Line - 30" HDPE	179.6787	ft	
Storm Line - Headwalls	4	Count	



S. MOUNTAIN ROAD



NOTE:
BEDDING WITHIN THE RIGHT-OF-WAY SHALL CONFORM TO CITY OF MESA AND MARICOPA COUNTY DEPARTMENT OF TRANSPORTATION STANDARDS, WHICHEVER IS MORE STRINGENT.



OFFSITE PAVING PLAN			
QUEEN CREEK UNIFIED SCHOOL DISTRICT NO. 95			
IMPROVEMENT PLANS FOR			
QUEEN CREEK ELEMENTARY SCHOOL #10			
DRAWING STATUS	SHEET	OF	
1ST CITY SUBMITTAL SET			
DATE: 11-30-23	2	4	OP-2



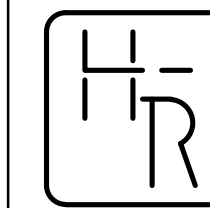
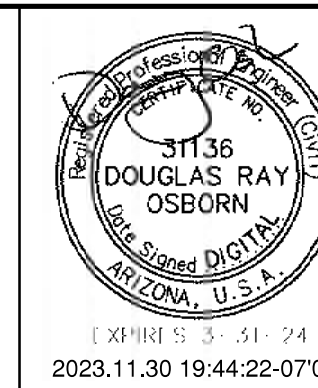
SFB PROJECT #70295000-9999-019N

23021202-2.DWG

OFFSITE PAVING CONSTRUCTION NOTES:

- INSTALL CONCRETE SIDEWALK (MAG STANDARD DETAIL NO. 230).
- CONSTRUCT CONCRETE VERTICAL CURB AND GUTTER (MAG STANDARD DETAIL NO. 220-1, TYPE A).
- MATCH EXISTING ELEVATION AND LOCATION.
- SAWCUT AND REMOVE EXISTING A.C. PAVEMENT, CONCRETE VERTICAL CURB, GUTTER AND SIDEWALK AS REQUIRED FOR NEW CONSTRUCTION.
- CONSTRUCT DRIVEWAY ENTRANCE (MARICOPA COUNTY DEPARTMENT OF TRANSPORTATION STANDARD DETAIL NO. 2036-2, WIDTH PER PLAN).
- CONSTRUCT 12' WIDE CONCRETE SIDEWALK SCUPPER WITH SPILLWAY AND SAFETY RAIL (MAG STANDARD DETAIL NO. 206-1, -2). SPILLWAY SHALL EXTEND ONE FOOT BELOW THE SAFETY RAIL SIDEWALK ABOVE.
- CONSTRUCT CURB OPENING CATCH BASIN (MAG STANDARD DETAIL NO. 533-1, -2, -3 LENGTH IS 17'. V DIMENSION SHALL BE PER THE
- INSTALL 12" THICK ANGULAR RIP-RAP (D50=6"). COLOR PER OWNER. INSTALL MIRAFI 180N FILTER FABRIC BENEATH RIP-RAP.
- INSTALL A.C. PAVEMENT SECTION PER GEOTECHNICAL ENGINEER RECOMMENDATIONS.
- SEE OFFSITE STRIPING PLANS FOR DETAILS ON PAINT STRIPING ALL OFFSITE DIRECTIONAL ARROWS, DRIVE LANES, ETC.
- INSTALL 18" H.D.P.E. DRAINAGE PIPE WITH SMOOTH INTERIOR AND 10.8 P.S.I. JOINTS.
- INSTALL ASPHALT PAVEMENT EDGE (MAG STANDARD DETAIL NO. 201, TYPE 'B').
- POTHOLE AND FIELD VERIFY ELEVATION AND LOCATION OF EXISTING UTILITIES PRIOR TO THE START OF CONSTRUCTION. NOTIFY DESIGN ENGINEER OF ANY CONFLICTS.
- RELOCATE EXISTING STREET LIGHT AND ASSOCIATED ELECTRICAL UTILITIES. SEE OFFSITE STREET LIGHT PLANS FOR DETAILS.
- EXISTING TREE TO REMAIN. PROTECT FROM DAMAGE.
- REMOVE EXISTING TREE.
- INSTALL CURB OPENING CATCH BASIN (MAG STANDARD DETAIL NO. 533-1, -2, -3, LENGTH IS 10').
- CORE DRILL AND CONNECT TO EXISTING CATCH BASIN WITH NEW 18" H.D.P.E. PIPE USING NON-SHRINKING MORTAR TO PROVIDE A WATERTIGHT CONNECTION.
- EXISTING COMMUNICATION OR ELECTRICAL BOX TO REMAIN. PROTECT FROM DAMAGE. CONTRACTOR TO FIELD VERIFY EXACT LAYOUT OF EXISTING UTILITY PRIOR TO CONSTRUCTION.
- EXISTING ELECTRICAL UTILITY MANHOLE TO REMAIN. PROTECT FROM DAMAGE. CONTRACTOR TO FIELD VERIFY EXACT LAYOUT OF EXISTING UTILITY PRIOR TO CONSTRUCTION.

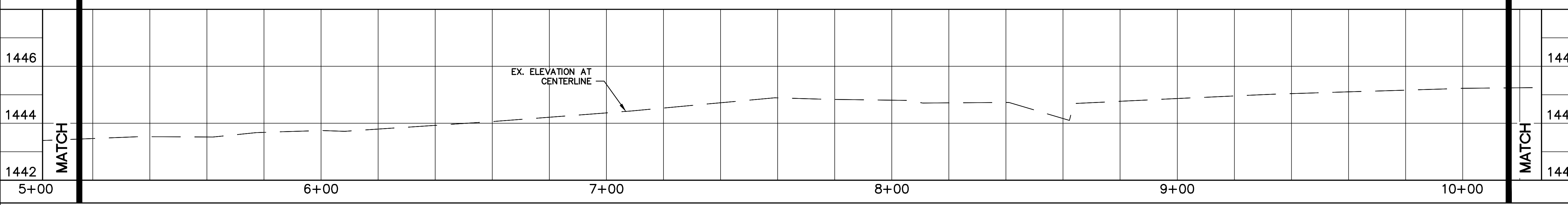
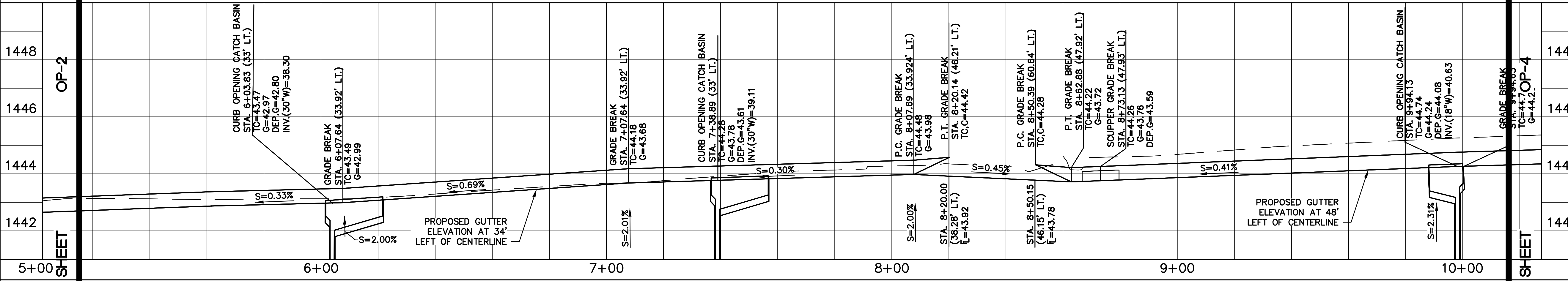
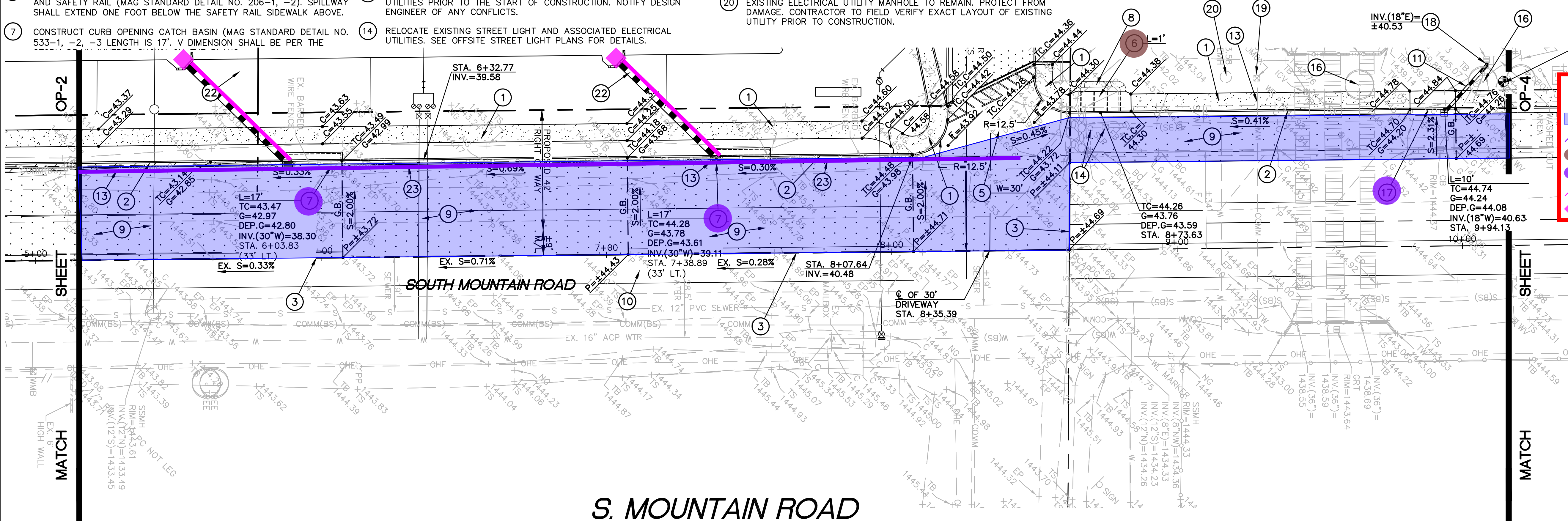
- EXISTING ELECTRICAL TRANSFORMER BOX TO REMAIN. PROTECT FROM DAMAGE. CONTRACTOR TO FIELD VERIFY EXACT LAYOUT OF EXISTING UTILITY PRIOR TO CONSTRUCTION.
- INSTALL 30" H.D.P.E. PIPE WITH SMOOTH INTERIOR AND 10.8 P.S.I. JOINTS. SEE GRADING AND DRAINAGE PLANS FOR ADDITIONAL INFORMATION.
- EXISTING COMMUNICATION LINE TO BE RELOCATED TO PROVIDE ADEQUATE SEPARATION FROM PROPOSED NEW CATCH BASINS AND



HESS - ROUNTREE, INC.
CONSULTING ENGINEERS & LAND SURVEYORS
9831 SOUTH 51ST STREET, SUITE C110
PHOENIX, ARIZONA 85044 (480)496-0244

DES. **DRO** DRN. **ANM** CKD **DRO** JOB NO. **2302-12**

OFF-SITE ADJACENT WAYS



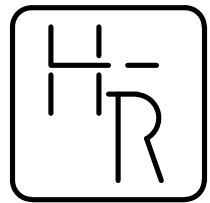
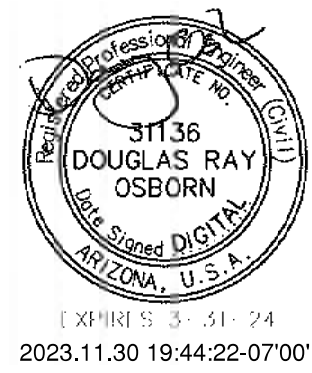
NOTE:
BEDDING WITHIN THE RIGHT-OF-WAY SHALL CONFORM TO CITY OF MESA AND MARICOPA COUNTY DEPARTMENT OF TRANSPORTATION STANDARDS, WHICHEVER IS GREATER.



OFFSITE PAVING PLAN			
QUEEN CREEK UNIFIED SCHOOL DISTRICT NO. 95			
IMPROVEMENT PLANS FOR			
QUEEN CREEK ELEMENTARY SCHOOL #10			
DRAWING STATUS	SHEET	OF	
1ST CITY SUBMITTAL SET			
DATE: 11-30-23	3	4	OP-3

SFB PROJECT #70295000-9999-019N

OFF-SITE ADJACENT WAYS



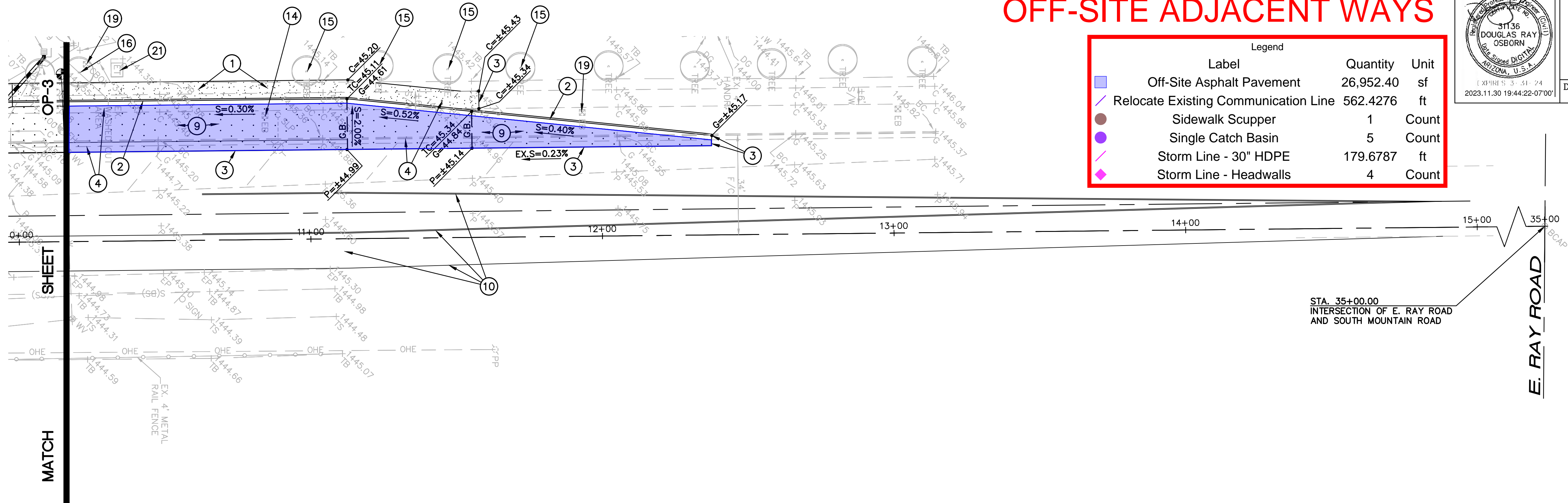
HESS - ROUNTREE, INC.
CONSULTING ENGINEERS & LAND SURVEYORS
9831 SOUTH 51ST STREET, SUITE C110
PHOENIX, ARIZONA 85044 (480)496-0244

DES. **DRO** DRN. **ANM** CKD **DRO** JOB NO. **2302-12**

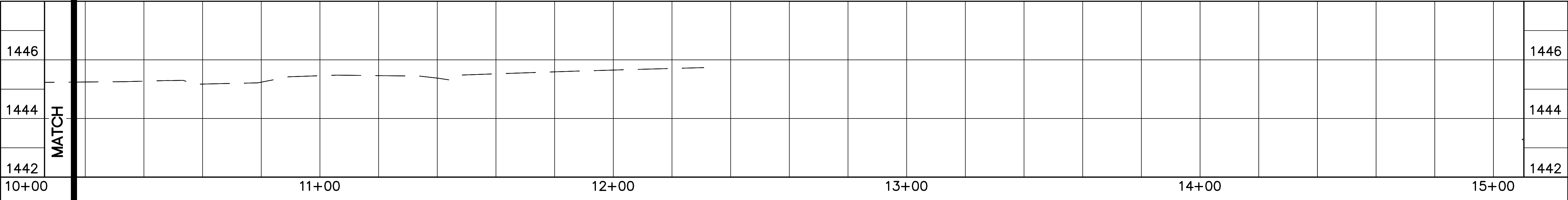
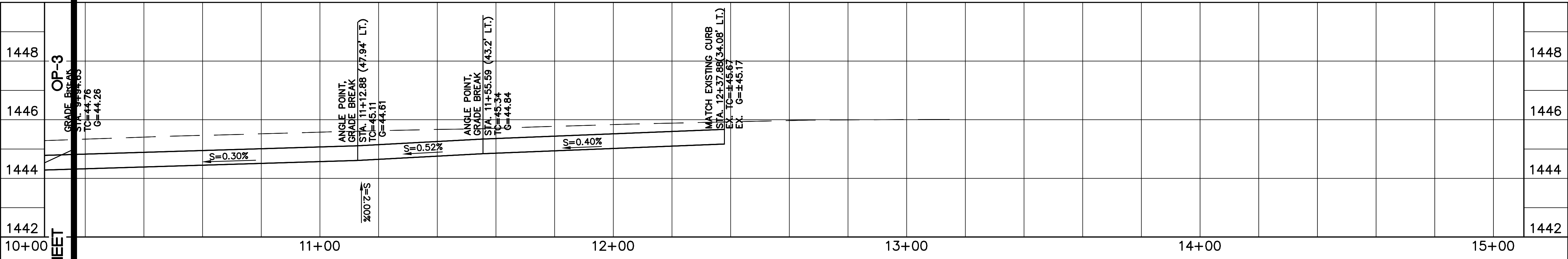
Legend		
Label	Quantity	Unit
Off-Site Asphalt Pavement	26,952.40	sf
Relocate Existing Communication Line	562.4276	ft
Sidewalk Scupper	1	Count
Single Catch Basin	5	Count
Storm Line - 30" HDPE	179.6787	ft
Storm Line - Headwalls	4	Count

OFFSITE PAVING CONSTRUCTION NOTES:

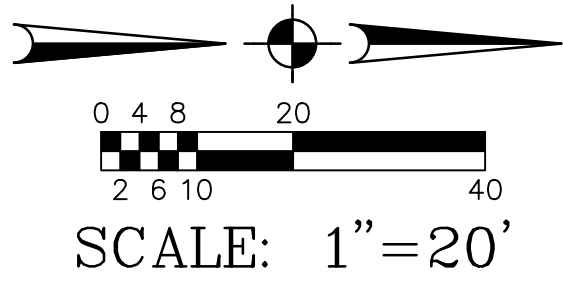
- INSTALL CONCRETE SIDEWALK (MAG STANDARD DETAIL NO. 230).
- CONSTRUCT CONCRETE VERTICAL CURB AND GUTTER (MAG STANDARD DETAIL NO. 220-1, TYPE A).
- MATCH EXISTING ELEVATION AND LOCATION.
- SAWCUT AND REMOVE EXISTING A.C. PAVEMENT, CONCRETE VERTICAL CURB, GUTTER AND SIDEWALK AS REQUIRED FOR NEW CONSTRUCTION.
- CONSTRUCT DRIVEWAY ENTRANCE (MARICOPA COUNTY DEPARTMENT OF TRANSPORTATION STANDARD DETAIL NO. 2036-2, WIDTH PER PLAN).
- CONSTRUCT 12' WIDE CONCRETE SIDEWALK SCUPPER WITH SPILLWAY AND SAFETY RAIL (MAG STANDARD DETAIL NO. 206-1, -2). SPILLWAY SHALL EXTEND ONE FOOT BELOW THE SAFETY RAIL SIDEWALK ABOVE.
- CONSTRUCT CURB OPENING CATCH BASIN (MAG STANDARD DETAIL NO. 533-1, -2, -3 LENGTH IS 17'. V DIMENSION SHALL BE PER THE STORM DRAIN INVERTS SHOWN ON THE PLANS.
- INSTALL 12" THICK ANGULAR RIP-RAP (D50=6"). COLOR PER OWNER. INSTALL MIRAFI 180N FILTER FABRIC BENEATH RIP-RAP.
- INSTALL A.C. PAVEMENT SECTION PER GEOTECHNICAL ENGINEER RECOMMENDATIONS.
- SEE OFFSITE STRIPING PLANS FOR DETAILS ON PAINT STRIPING ALL OFFSITE DIRECTIONAL ARROWS, DRIVE LANES, ETC.
- INSTALL 18" H.D.P.E. DRAINAGE PIPE WITH SMOOTH INTERIOR AND 10.8 P.S.I. JOINTS.
- INSTALL ASPHALT PAVEMENT EDGE (MAG STANDARD DETAIL NO. 201, TYPE 'B').
- POTHOLE AND FIELD VERIFY ELEVATION AND LOCATION OF EXISTING UTILITIES PRIOR TO THE START OF CONSTRUCTION. NOTIFY DESIGN ENGINEER OF ANY CONFLICTS.
- RELOCATE EXISTING STREET LIGHT AND ASSOCIATED ELECTRICAL UTILITIES. SEE OFFSITE STREET LIGHT PLANS FOR DETAILS.
- EXISTING TREE TO REMAIN. PROTECT FROM DAMAGE.
- REMOVE EXISTING TREE.
- INSTALL CURB OPENING CATCH BASIN (MAG STANDARD DETAIL NO. 533-1, -2, -3, LENGTH IS 10').
- CORE DRILL AND CONNECT TO EXISTING CATCH BASIN WITH NEW 18" H.D.P.E. PIPE USING NON-SHRINKING MORTAR TO PROVIDE A WATERTIGHT CONNECTION.
- EXISTING COMMUNICATION OR ELECTRICAL BOX TO REMAIN. PROTECT FROM DAMAGE. CONTRACTOR TO FIELD VERIFY EXACT LAYOUT OF EXISTING UTILITY PRIOR TO CONSTRUCTION.
- EXISTING ELECTRICAL UTILITY MANHOLE TO REMAIN. PROTECT FROM DAMAGE. CONTRACTOR TO FIELD VERIFY EXACT LAYOUT OF EXISTING UTILITY PRIOR TO CONSTRUCTION.
- EXISTING ELECTRICAL TRANSFORMER BOX TO REMAIN. PROTECT FROM DAMAGE. CONTRACTOR TO FIELD VERIFY EXACT LAYOUT OF EXISTING UTILITY PRIOR TO CONSTRUCTION.
- INSTALL 30" H.D.P.E. PIPE WITH SMOOTH INTERIOR AND 10.8 P.S.I. JOINTS. SEE GRADING AND DRAINAGE PLANS FOR ADDITIONAL INFORMATION.
- EXISTING COMMUNICATION LINE TO BE RELOCATED TO PROVIDE ADEQUATE SEPARATION FROM PROPOSED NEW CATCH BASINS AND STORM DRAIN PIPE. CONTRACTOR SHALL COORDINATION RELOCATION WITH APPROPRIATE UTILITY COMPANY.



S. MOUNTAIN ROAD



NOTE:
BEDDING WITHIN THE RIGHT-OF-WAY SHALL CONFORM TO CITY OF MESA
AND MARICOPA COUNTY DEPARTMENT OF TRANSPORTATION STANDARDS,
WHICHEVER IS MORE STRINGENT.



OFFSITE PAVING PLAN			
QUEEN CREEK UNIFIED SCHOOL DISTRICT NO. 95			
IMPROVEMENT PLANS FOR QUEEN CREEK ELEMENTARY SCHOOL #10			
DRAWING STATUS	SHEET	OF	OP-4
1ST CITY SUBMITTAL SET	4	4	
DATE: 11-30-23			



SFB PROJECT #70295000-9999-019N

OS - 1 - Concrete Sidewalk	1182.91 SF
OS - 2 - Concrete Vertical Curb and Gutter	204.70 LF
OS - 5 - Driveway Entrance	776.81 SF
OS - 7 - Curb Opening Catch Basin 17"	2 EA

OFFSITE PAVING CONSTRUCTION NOTES:

- 1

INSTALL CONCRETE SIDEWALK (MAG STANDARD DETAIL NO. 230).
- 2

CONSTRUCT CONCRETE VERTICAL CURB AND GUTTER (MAG STANDARD DETAIL NO. 220-1, TYPE A).
- 3

MATCH EXISTING ELEVATION AND LOCATION.
- 4

SAWCUT AND REMOVE EXISTING A.C. PAVEMENT, CONCRETE VERTICAL CURB, GUTTER AND SIDEWALK AS REQUIRED FOR NEW CONSTRUCTION.
- 5

CONSTRUCT DRIVEWAY ENTRANCE (MARICOPA COUNTY DEPARTMENT OF TRANSPORTATION STANDARD DETAIL NO. 2036-2, WIDTH PER PLAN).
- 6

CONSTRUCT 12' WIDE CONCRETE SIDEWALK SCUPPER WITH SPILLWAY AND SAFETY RAIL (MAG STANDARD DETAIL NO. 208-1, -2). SPILLWAY SHALL EXTEND ONE FOOT BELOW THE SAFETY RAIL SIDEWALK ABOVE.
- 7

CONSTRUCT CURB OPENING CATCH BASIN (MAG STANDARD DETAIL NO. 533-1, -2, -3 LENGTH IS 17'. V DIMENSION SHALL BE PER THE STORM DRAIN INVERTS SHOWN ON THE PLANS.
- 8

INSTALL 12" THICK ANGULAR RIP-RAP (D50=6"). COLOR PER OWNER. INSTALL MIRAFI 180N FILTER FABRIC BENEATH RIP-RAP.
- 9

INSTALL A.C. PAVEMENT SECTION PER GEOTECHNICAL ENGINEER RECOMMENDATIONS.
- 10

SEE OFFSITE STRIPING PLANS FOR DETAILS ON PAINT STRIPING ALL OFFSITE DIRECTIONAL ARROWS, DRIVE LANES, ETC.
- 11

INSTALL 18" H.D.P.E. DRAINAGE PIPE WITH SMOOTH INTERIOR AND 10.8 P.S.I. JOINTS.
- 12

INSTALL ASPHALT PAVEMENT EDGE (MAG STANDARD DETAIL NO. 201, TYPE 'B').
- 13

POTHOLE AND FIELD VERIFY ELEVATION AND LOCATION OF EXISTING UTILITIES PRIOR TO THE START OF CONSTRUCTION. NOTIFY DESIGN ENGINEER OF ANY CONFLICTS.
- 14

RELOCATE EXISTING STREET LIGHT AND ASSOCIATED ELECTRICAL UTILITIES. SEE OFFSITE STREET LIGHT PLANS FOR DETAILS.
- 15

EXISTING TREE TO REMAIN. PROTECT FROM DAMAGE.
- 16

REMOVE EXISTING TREE.
- 17

INSTALL CURB OPENING CATCH BASIN (MAG STANDARD DETAIL NO. 533-1, -2, -3, LENGTH IS 10').
- 18

CORE DRILL AND CONNECT TO EXISTING CATCH BASIN WITH NEW 18" H.D.P.E. PIPE USING NON-SHRINKING MORTAR TO PROVIDE A WATERTIGHT CONNECTION.

- 19

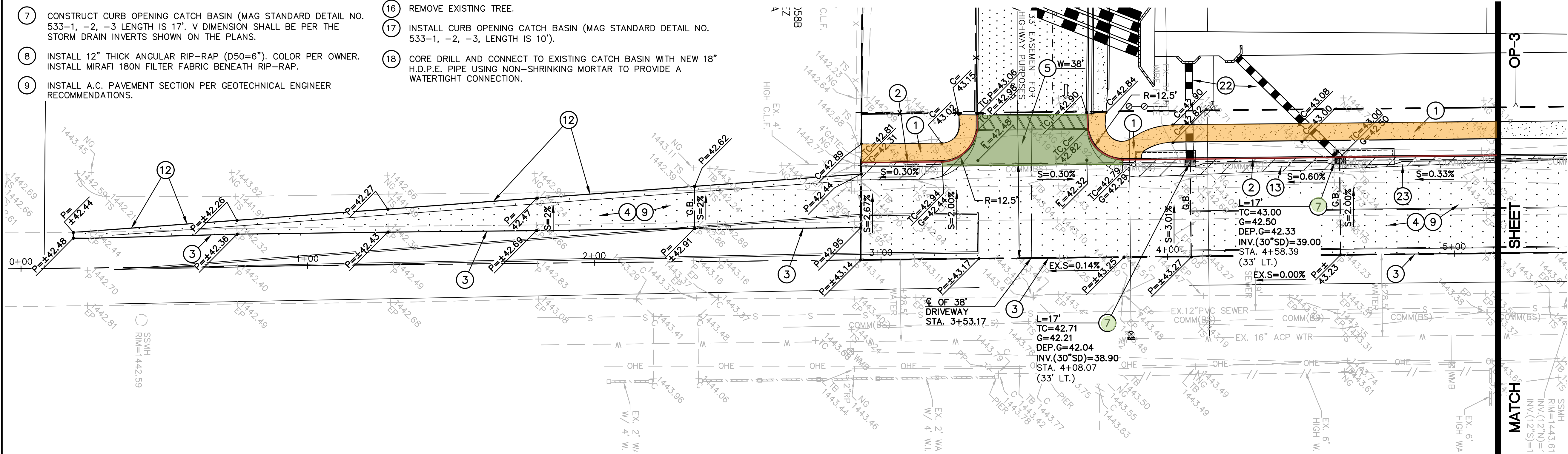
EXISTING COMMUNICATION OR ELECTRICAL BOX TO REMAIN. PROTECT FROM DAMAGE. CONTRACTOR TO FIELD VERIFY EXACT LAYOUT OF EXISTING UTILITY PRIOR TO CONSTRUCTION.
- 20

EXISTING ELECTRICAL UTILITY MANHOLE TO REMAIN. PROTECT FROM DAMAGE. CONTRACTOR TO FIELD VERIFY EXACT LAYOUT OF EXISTING UTILITY PRIOR TO CONSTRUCTION.
- 21

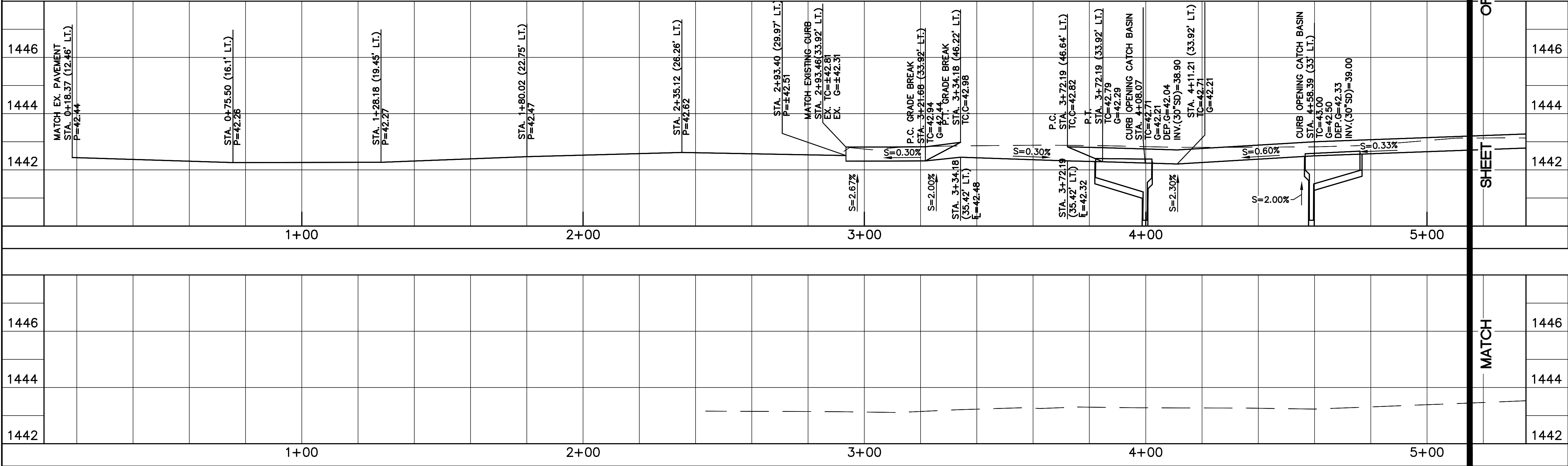
EXISTING ELECTRICAL TRANSFORMER BOX TO REMAIN. PROTECT FROM DAMAGE. CONTRACTOR TO FIELD VERIFY EXACT LAYOUT OF EXISTING UTILITY PRIOR TO CONSTRUCTION.
- 22

INSTALL 30" H.D.P.E. PIPE WITH SMOOTH INTERIOR AND 10.8 P.S.I. JOINTS. SEE GRADING AND DRAINAGE PLANS FOR ADDITIONAL INFORMATION.
- 23

EXISTING COMMUNICATION LINE TO BE RELOCATED TO PROVIDE ADEQUATE SEPARATION FROM PROPOSED NEW CATCH BASINS AND STORM DRAIN PIPE. CONTRACTOR SHALL COORDINATION RELOCATION WITH APPROPRIATE UTILITY COMPANY.

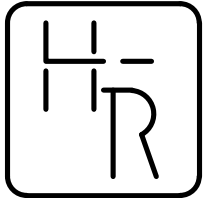
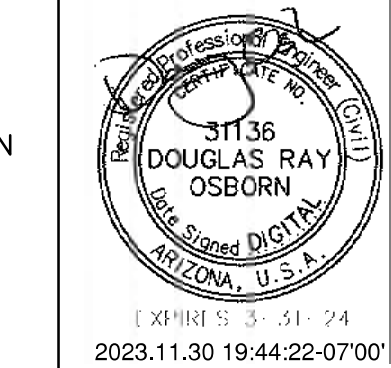


S. MOUNTAIN ROAD



NOTE:

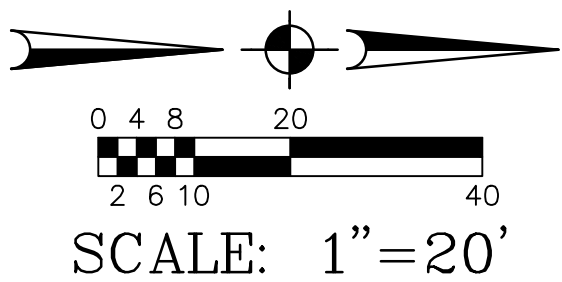
BEDDING WITHIN THE RIGHT-OF-WAY SHALL CONFORM TO CITY OF MESA AND MARICOPA COUNTY DEPARTMENT OF TRANSPORTATION STANDARDS, WHICHEVER IS MORE STRINGENT.



HESS - ROUNTREE, INC.
CONSULTING ENGINEERS & LAND SURVEYORS
9831 SOUTH 51ST STREET, SUITE C110
PHOENIX, ARIZONA 85044 (480)496-0244

DES: **DRO** DRN: **ANM** CKD: **DRO** JOB NO. **2302-12**

OFF-SITE ADJACENT WAYS



OFFSITE PAVING PLAN
QUEEN CREEK UNIFIED SCHOOL DISTRICT NO. 95

IMPROVEMENT PLANS FOR QUEEN CREEK ELEMENTARY SCHOOL #10			
DRAWING STATUS	SHEET	OF	OP-2
1ST CITY SUBMITTAL SET			
DATE: 11-30-23	2	4	



- OS - 1 - Concrete Sidewalk

2889.59 SF

OS - 2 - Concrete Vertical Curb and Gutter

491.73 LF

OS - 5 - Driveway Entrance

677.37 SF

OS - 7 - Curb Opening Catch Basin 10'

1 EA

OS - 7 - Curb Opening Catch Basin 17'

2 EA

OFFSITE PAVING CONSTRUCTION NOTES:

1

INSTALL CONCRETE SIDEWALK (MAG STANDARD DETAIL NO. 230).

2

CONSTRUCT CONCRETE VERTICAL CURB AND GUTTER (MAG STANDARD DETAIL NO. 220-1, TYPE A).

3

MATCH EXISTING ELEVATION AND LOCATION.

4

SAWCUT AND REMOVE EXISTING A.C. PAVEMENT, CONCRETE VERTICAL CURB, GUTTER AND SIDEWALK AS REQUIRED FOR NEW CONSTRUCTION.

5

CONSTRUCT DRIVEWAY ENTRANCE (MARICOPA COUNTY DEPARTMENT OF TRANSPORTATION STANDARD DETAIL NO. 2036-2, WIDTH PER PLAN).

6

CONSTRUCT 12' WIDE CONCRETE SIDEWALK SCUPPER WITH SPILLWAY AND SAFETY RAIL (MAG STANDARD DETAIL NO. 206-1, -2). SPILLWAY SHALL EXTEND ONE FOOT BELOW THE SAFETY RAIL SIDEWALK ABOVE.

7

CONSTRUCT CURB OPENING CATCH BASIN (MAG STANDARD DETAIL NO. 533-1, -2, -3 LENGTH IS 17'. V DIMENSION SHALL BE PER THE

8

INSTALL 12" THICK ANGULAR RIP-RAP (D50=6"). COLOR PER OWNER. INSTALL MIRAFI 180N FILTER FABRIC BENEATH RIP-RAP.

9

INSTALL A.C. PAVEMENT SECTION PER GEOTECHNICAL ENGINEER RECOMMENDATIONS.

10

SEE OFFSITE STRIPING PLANS FOR DETAILS ON PAINT STRIPING ALL OFFSITE DIRECTIONAL ARROWS, DRIVE LANES, ETC.

11

INSTALL 18" H.D.P.E. DRAINAGE PIPE WITH SMOOTH INTERIOR AND 10.8 P.S.I. JOINTS.

12

INSTALL ASPHALT PAVEMENT EDGE (MAG STANDARD DETAIL NO. 201, TYPE 'B').

13

POTHOLE AND FIELD VERIFY ELEVATION AND LOCATION OF EXISTING UTILITIES PRIOR TO THE START OF CONSTRUCTION. NOTIFY DESIGN ENGINEER OF ANY CONFLICTS.

14

RELOCATE EXISTING STREET LIGHT AND ASSOCIATED ELECTRICAL UTILITIES. SEE OFFSITE STREET LIGHT PLANS FOR DETAILS.

15

EXISTING TREE TO REMAIN. PROTECT FROM DAMAGE.

16

REMOVE EXISTING TREE.

17

INSTALL CURB OPENING CATCH BASIN (MAG STANDARD DETAIL NO. 533-1, -2, -3, LENGTH IS 10').

18

CORE DRILL AND CONNECT TO EXISTING CATCH BASIN WITH NEW 18" H.D.P.E. PIPE USING NON-SHRINKING MORTAR TO PROVIDE A WATERTIGHT CONNECTION.

19

EXISTING COMMUNICATION OR ELECTRICAL BOX TO REMAIN. PROTECT FROM DAMAGE. CONTRACTOR TO FIELD VERIFY EXACT LAYOUT OF EXISTING UTILITY PRIOR TO CONSTRUCTION.

20

EXISTING ELECTRICAL UTILITY MANHOLE TO REMAIN. PROTECT FROM DAMAGE. CONTRACTOR TO FIELD VERIFY EXACT LAYOUT OF EXISTING UTILITY PRIOR TO CONSTRUCTION.

21

EXISTING ELECTRICAL TRANSFORMER BOX TO REMAIN. PROTECT FROM DAMAGE. CONTRACTOR TO FIELD VERIFY EXACT LAYOUT OF EXISTING UTILITY PRIOR TO CONSTRUCTION.

22

INSTALL 30" H.D.P.E. PIPE WITH SMOOTH INTERIOR AND 10.8 P.S.I. JOINTS. SEE GRADING AND DRAINAGE PLANS FOR ADDITIONAL INFORMATION.

23

EXISTING COMMUNICATION LINE TO BE RELOCATED TO PROVIDE ADEQUATE SEPARATION FROM PROPOSED NEW CATCH BASINS AND

ST 35
DOUGLAS RAY
OSBORN
ARIZONA, U.S.A.

11/19/2023 11:30
2023.11.30 19:44:22-0700

H

R

HESS - ROUNTREE, INC.
CONSULTING ENGINEERS & LAND SURVEYORS
9831 SOUTH 51ST STREET, SUITE C110
PHOENIX, ARIZONA 85044 (480)496-0244

DRO

ANM

DRO

2302-12

OFF-SITE ADJACENT WAYS

NOTE:
BEDDING WITHIN THE RIGHT-OF-WAY SHALL CONFORM TO CITY OF MESA AND MARICOPA COUNTY DEPARTMENT OF TRANSPORTATION STANDARDS, WHICHEVER IS GREATER.

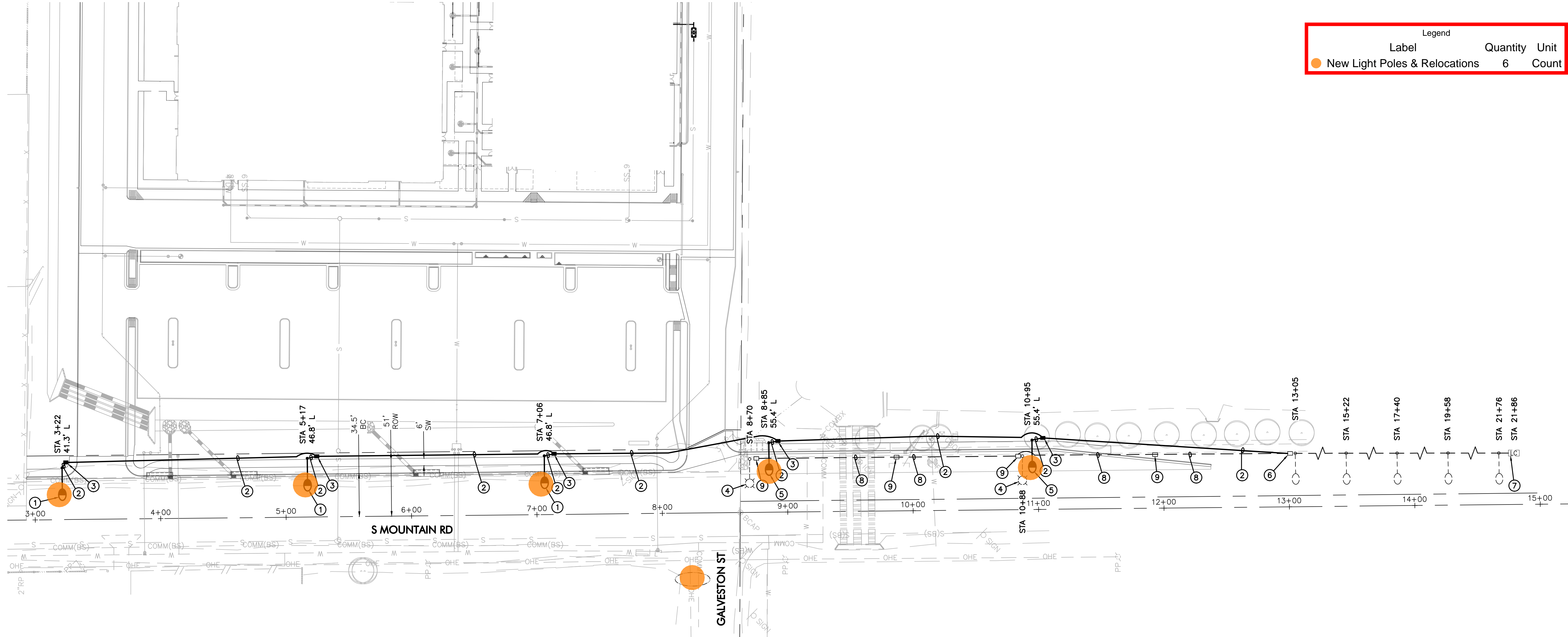
0 4 8 20
2 6 10 40
SCALE: 1"=20'

OFFSITE PAVING PLAN
QUEEN CREEK UNIFIED SCHOOL DISTRICT NO. 95
IMPROVEMENT PLANS FOR
QUEEN CREEK ELEMENTARY SCHOOL #10
DRAWING STATUS
1ST CITY SUBMITTAL SET
DATE: 11-30-23
SHEET
3
OF
4
OP-3

SFB PROJECT #70295000-9999-019N

OFF-SITE ADJACENT WAYS

Legend			
Label	Quantity	Unit	
● New Light Poles & Relocations	6	Count	

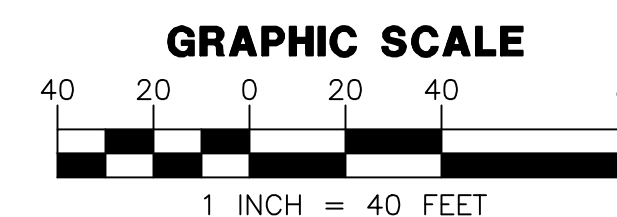


CONSTRUCTION NOTES

- 21,000 LUMEN LED, TYPE 3 (SEE LUMINAIRE SCHEDULE), 45' MOUNTING HEIGHT POLE (M-73.03, P-207), FOUNDATION (SL-74.03, F-101, SL-74.08). GROUNDING & FUSING (SL-76.01).
- 2" CONDUIT (2) #8 XHHW CONDUCTORS & (1) #8 BARE 7-STRAND BOND.
- #5 PULL BOX (SL-75.01, PB-104, SL-75.02 & SL-76.01)
- RELOCATE STREET LIGHT AS SHOWN. REMOVE EXISTING FOUNDATION BACKFILL & COMPACT COM SPECIFICATIONS.
- INSTALL RELOCATED 21,000 LUMEN LED STREET LIGHT ON NEW FOUNDATION (SL-74.03, F-101, SL-74.08). GROUNDING & FUSING (SL-76.01).
- SWEEP CONDUIT INTO EX. PULL BOX.
- COORDINATE ACCESS INTO EXISTING LIGHTING CONTROL CABINET WITH C.O.M. ENGINEERING INSPECTOR.
- SALVAGE EXISTING WIRE TO COM (SEE GENERAL NOTE 4). ABANDON CONDUIT IN PLACE.
- REMOVE EXISTING PULL BOX AND RETURN TO CITY OF MESA (SEE GEN. NOTE 4)

LEGEND

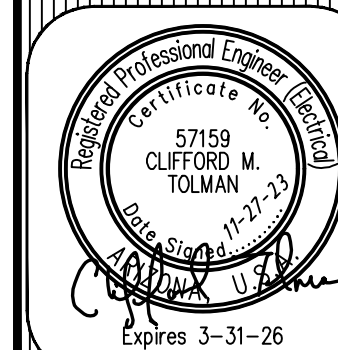
- 21,000 LUMEN LED STREETLIGHT
- EXISTING STREET LIGHT TO REMAIN
- EXISTING STREET LIGHT TO BE REMOVED
- () NEW CONDUIT RUN
- - - EXISTING CONDUIT RUN
- FUTURE STREET LIGHT
- PULL BOX
- EXISTING PULL BOX
- ⬮ FIRE HYDRANT
- [LC] EXISTING LIGHTING CONTROL CABINET



SFB PROJECT #70295000-9999-019N

NO.	DATE	SUBMITTALS/REVISIONS (DESCRIPTIONS)
-----	------	-------------------------------------

1	11-2-23	1ST SUBMITTAL
2	11-30-23	2ND SUBMITTAL



DRAWING NO:	
SL2	
OF	3
SHEET:	
6	OF 10

PROJECT: TITLE:

MESA, ARIZONA
QUEEN CREEK ES #10
MOUNTAIN RD & GALVESTON ST
STREET LIGHT PLAN

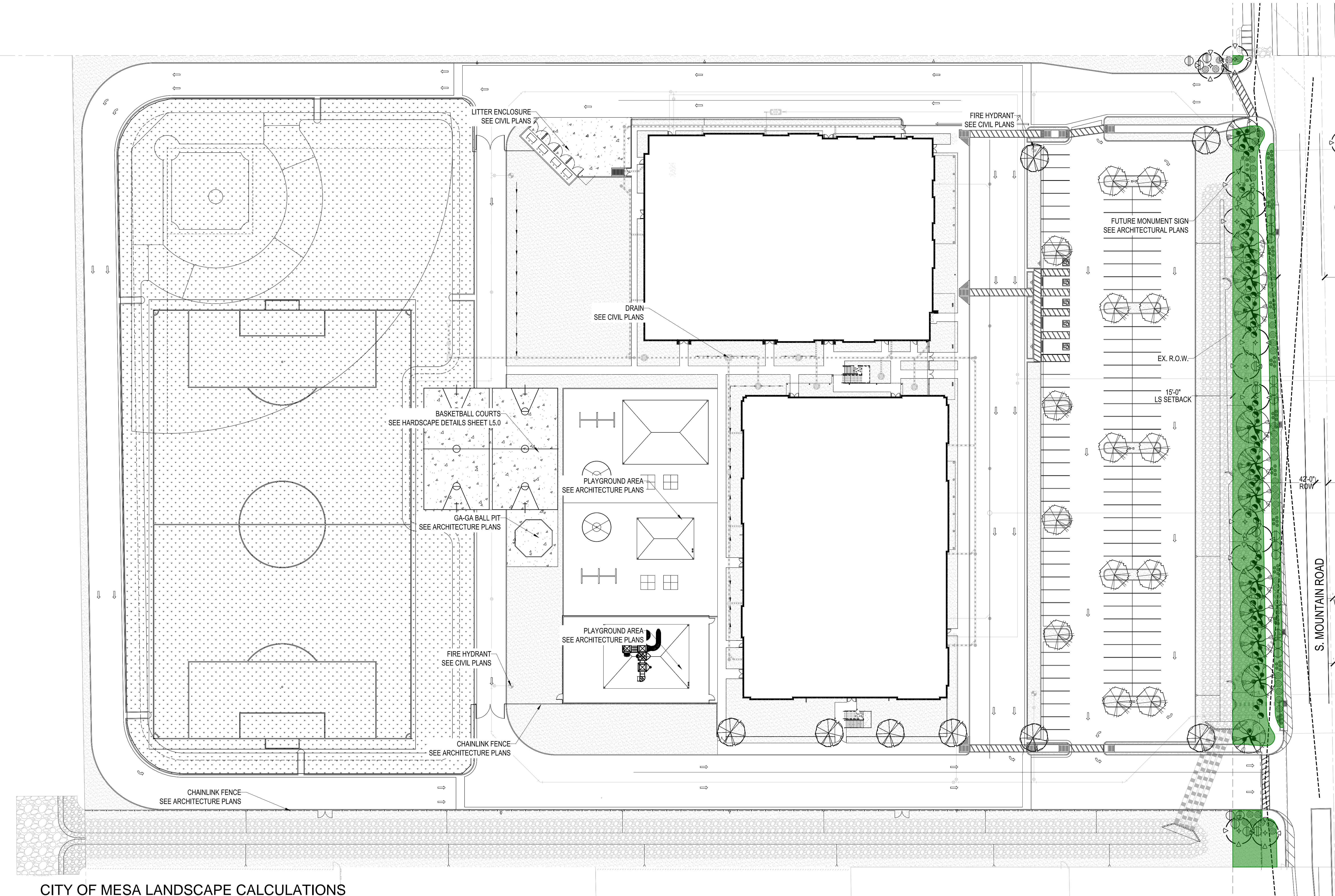
WRIGHT ENGINEERING
PROJECT NO:
23416

DESIGN BY: SLL
DRAWN BY: SLL
CHECKED BY: CMT

WRIGHT
engineering corporation
ELECTRICAL ENGINEERING AND DESIGN
165 EAST CHILTON DRIVE • CHANDLER, ARIZONA 85225
PHONE 480.497.5829 • FAX 480.497.5807
www.wrightengineering.us

OFF-SITE ADJACENT WAYS

Legend		
Label	Quantity	Unit
Landscape Area	12,405.00	sf



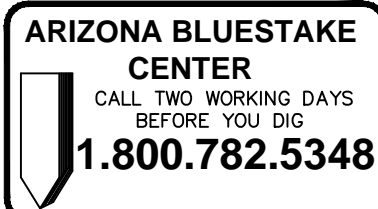
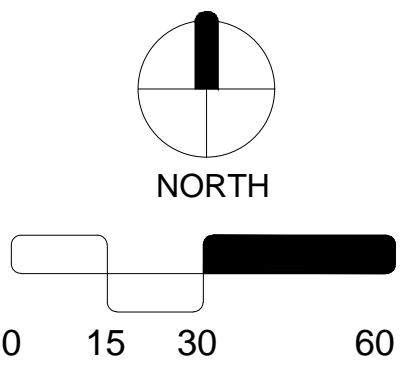
PLANTING MATERIAL LEGEND

PERIMETER TREES	SIZE	NOTES	QTY
Acacia aneura	24" Box	*ADWR	12
Mulga	Caliper Size: 1.5"		
Acacia stenophylla	36" Box	*ADWR	13
Shoestring Acacia	Caliper Size: 2.0"		
Chitalpa tashkentensis	24" Box	*ADWR	14
Chitalpa	Caliper Size: 1.5"		
Corymbia papuana	15 Gallon	*ADWR	8
Ghost Gum	Caliper Size: 1.0"		
GROUNDCOVERS			QTY
Ruellia simplex 'Katie'	5 Gallon	*ADWR	67
Katie Ruellia	can full		
Lantana montevidensis	5 Gallon	*ADWR	54
Trailing Lantana 'gold'	can full		
SHRUBS / ACCENTS			QTY
Hesperaloe parviflora	5 Gallon		36
Red Yucca	can full	*ADWR	
Calliandra x 'Sierra Star'	5 Gallon		43
Sierra Star Red Fairy Duster	can full	*ADWR	
Muhlenbergia rigida 'Nashville'	5 Gallon		26
Nashville Muhly Grass	can full	*ADWR	
LANDSCAPE MATERIALS			QTY
**Rip Rap, 1"-3" Rock Pros 'Apache Carmel', 4" deep in planting areas per plan.			35,260 s.f.
**Decomposed Granite, 3/4" screened Rock Pros 'Desert Gold', 2" deep in planting areas per plan.			73,970 s.f.
turf, Hydroseed, Mix: Blackjack in planting areas per plan, provide sports mix soil 4" thk.			112,930 s.f.

*ADWR = Arizona Department of Water Resources
Approved Low-Water Use Plant
** Final color to be approved by owner representative

CITY OF MESA LANDSCAPE CALCULATIONS

	REQUIRED	PROVIDED
PERIMETER LANDSCAPE PER 11-33-3 MESA Z/O ARTERIAL STREET 1 TREE 6 SHRUBS PER 25 FEET OF STREET FRONTAGE 25% OF TREES SHALL BE 36" OR LARGER 50% OF TREES SHALL BE 24" BOX	20 TREES / 120 SHRUBS 36" BOX TREES = 5 TREES 24" BOX TREES = 15 TREES	S MOUNTAIN ROAD: 500' 25 TREES PROVIDED 226 SHRUBS PROVIDED 36" BOX TREES = 12 TREES 24" BOX TREES = 13 TREES
SHADE COVERAGE AREA	50% OF LS AREA	EXEMPT
INTERIOR PARKING LANDSCAPE PER 11-33-4 MESA Z/O: 1 TREE / 3 SHRUB PER PLANTER ISLAND	EXEMPT	EXEMPT
FOUNDATION LANDSCAPE PER 11-33-5 MESA Z/O: 1 TREE / 50 LF BUILDING FACE 10% OF TREES SHALL BE 36" BOX OR LARGER	EXEMPT	EXEMPT



LANDSCAPE PLAN

QUEEN CREEK ELEMENTARY
QUEEN CREEK UNIFIED SCHOOL DISTRICT #10
5626 S. MOUNTAIN ROAD
MESA, ARIZONA 85212
OVERALL SITE PLAN

THIS DRAWING IS AN INSTRUMENT OF SERVICE & IS THE PROPERTY OF SPS+ ARCHITECTS LLP & MAY NOT BE REPRODUCED OR REPRODUCTIONS HEREOF USED WITHOUT WRITTEN PERMISSION

REVISIONS		
MARK	DATE	DESCRIPTION

REVIEWED BY: JEH
DRAWN BY: ELO



CD SET
DATE: 01-17-2024

JOB No: R2300001

SHEET:

L1.0
2 of 8

SFB PROJECT #70295000-9999-019N